

Operating Instructions

Model: V8NEWZ2 SC2

CONTENTS

INTRODUCTION - SUPERCUT 2000	1
SAFETY ALERT SYMBOLS & NOTATIONS	1
IMPORTANT SAFETY INFORMATION	1
Occupational Health and Safety	2
NOISE AND VIBRATION LEVELS	2
MODEL AND SERIAL NUMBERS	3
CUSTOMER SERVICE/WARRANTY	3
SAFETY AND WARNINGS	4
Before Operating	4
Safe Operation of the SuperCut 2000 NT	4
Limitations and Restrictions	5
Safe Operation	5
Protective Clothing	5
Supercut 2000NT Nursery Trimmer - Controls	6
Fuel & Oil	7
Filling the Fuel Tank	7
STEP BY STEP OPERATION	8
Starting	9
Stopping	10
Installation of Collection Bag	10
Removal of Collection Bag	10
Replacing the Drive Belt	10
Adjusting handles	11
MAINTENANCE	11
Oiling Cutting Blades	11
Greasing Crank Case	11
Setting and Adjustment of Cutting Blades	12
Check the adjustment of blades	12
Adjustment and Cleaning of Blow-duct.	12
Cleaning of Blower	12
Cooling Fins	13
Carburettor Adjustment	13-14
PLANT HYGIENE	15
ROUTINE MAINTENANCE	15
After Each Use	15
Sharpening Cutting Blades	15
TRANSPORT & STORAGE	16
Long Term Storage	16
Removal from Storage	16
MAINTENANCE CHECKLIST	16
TROUBLESHOOTING	17
SPECIFICATIONS	17

INTRODUCTION - SuperCut 2000



Thank you for purchasing the new SuperCut 2000 NT Nursery Trimmer from Nursery Supplies Australia Pty. Ltd.

The SuperCut 2000 is a machine for pruning and harvesting plant material. It can be used in the Plant production, Forestry, Horticultural and Agricultural industries. It is designed to be operated by three trained people.

The machine should only be used on plants with a stem diameter of 7mm or less.

SAFETY ALERT SYMBOLS & NOTATIONS

The following safety notations are used in these Operating Instructions. Read and understand the message in each notation and be alert to unsafe conditions and the possibility of personal injury.

Symbol	Type of Warning
NOTE	Points out general reference information regarding proper operation and maintenance practices
IMPORTANT	Indicates specific procedures or information that is required to prevent damage to the machine or attachments
CAUTION	Identifies safe operating practices or indicates unsafe conditions that could result in personal injury.
 WARNING	Describes a condition where failure to follow the instructions could result in severe personal injury
 DANGER	Designates a condition where failure to follow instructions or heed warning will most likely result in serious personal injury or death

IMPORTANT SAFETY INFORMATION



WARNING



- These instructions convey important information on the safe operation and maintenance of the SuperCut 2000 NT. This machine can cause serious injuries. Read the Operating Instructions carefully for the correct handling, preparation, maintenance, starting and stopping of the machine; be familiar with all controls and the proper use of the machine.
- Never allow children to use the machine
- Avoid operating while people, especially children are nearby
- Never climb on a ladder while operating the machine.
- Never use the machine alone
- Always ensure all handles and guards are fitted when using the machine. Never attempt to use an incomplete machine or one fitted with an unauthorised modification
- When transporting or storing the machine always fit the cutting device guard.

IMPORTANT SAFETY INFORMATION

OCCUPATIONAL HEALTH AND SAFETY

Nursery Supplies Australia Pty Ltd recommend that all new and potential users of the SuperCut 2000 NT be aware of Occupational Health and Safety Requirements pertaining to their own country, and use this Trimmer in accordance with those regulations.

NOISE AND VIBRATION LEVELS

The following data relates to the SuperCut 2000 Nursery Trimmer under normal operating conditions.

Noise Levels

The Supercut 2000NT Nursery Trimmer has been tested for noise levels measured at the ear of the operator at the engine end, with blades engaged and engine at two speeds.

Sound pressure level at workstation		
High level recorded	=	98,9 dBA @ 8100 RPM
High level recorded	=	95,1 dBA @ 7000 RPM
Peak instantaneous sound pressure	=	112,5 dBC @ 8100 RPM
Sound Power Level measured	=	110,3 dBA @ 8100 RPM

Based on measurements of identical machines per international standard testing procedures

WARNING

Nursery Supplies Australia Pty Ltd therefore recommend that all persons operating the Supercut 2000NT Nursery Trimmer ensure that they make use of hearing protection devices at all times.

Vibration Levels

The Supercut 2000NT Nursery Trimmer has also been tested for Vibration.

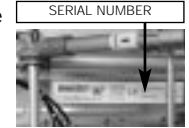
Recorded Levels and locations are as follows:

handlebar on engine side	=	7,5 m/s2 @ 8120 RPM
handlebar on accelerator side	=	6,1 m/s2 @ 8120 RPM
handlebar on engine side	=	6,7 m/s2 @ 7020 RPM
handlebar on accelerator side	=	3,6 m/s2 @ 7020 RPM

Based on measurements of identical machines per international standard testing procedures

MODEL AND SERIAL NUMBERS

The model and serial numbers are located on the body of the Trimmer above the cutting blades.



CUSTOMER SERVICE AND WARRANTY

Use only genuine spare parts for your SuperCut 2000 NT. When ordering spare parts, contact Nursery Supplies Australia Pty Ltd or authorised agent with the model and part details.

The model & Serial number will need to be recorded and quoted to the supplier in the event of a service issue. For easy reference, the following table will assist to record the correct model information at time of purchase, or query and when ordering spare parts.

Model No: V8NEWZ2 or V8XHD

Serial No: _____

Date of Purchase _____

WARRANTY

The manufacturer warrants Supercut 2000NT for 12 months against faulty manufacture or failure of original parts when operated according to these instructions. The warranty does not cover replacements required as a result of fair wear & tear or as a result of unauthorised modification, or operator negligence.

The warranty covers replacement parts only & does not cover labour costs.

Please retain this manual for future reference.

This manual also explains the necessary information for the correct operation of Zenoah/Komatsu engines fitted to Supercut 2000NT Nursery Trimmer distributed by Nursery Supplies Australia Pty Ltd or Authorised Agent.

Please refer to Nursery Supplies Australia Pty. Ltd. for information concerning problems not described in this manual and for replacement parts.

SAFETY AND WARNINGS

BEFORE OPERATING



DANGER

Never allow children to use or be near the Trimmer while it is operating.



WARNING

Carefully inspect the area where the Trimmer is to be used and remove any objects, which may be damaged or thrown by the Trimmer in operation.

IMPORTANT

- Read the Operating Instructions to familiarise yourself with the components of the SuperCut 2000 NT and its use.
- Check the Trimmer carefully for loose screws, bolts, and damaged or broken parts.
- If necessary, replace parts or make necessary repairs. Check if blades need sharpening.
- Inspect the plants to be trimmed for hidden wires, posts, stakes or other rubbish that may damage the blades.

NOTE

Be familiar with all controls and safety warnings.

SAFE OPERATION OF THE SUPERCUT 2000 NT



WARNING



- Dress properly. Do NOT wear loose clothing or jewellery which can be caught in moving parts. Use sturdy gloves, non-skid footwear, ear protection & safety glasses
- Do not operate the Trimmer holding it above waist height.
- Keep your hands and body away from the blades at all times.
- Never leave the Trimmer unattended to prevent unauthorised use.
- Store the Trimmer safely out of the reach of children.
- The engine & blades of the Supercut 2000NT Nursery Trimmer get hot with continuous use. Do NOT place hands or any body part near or on potentially hot surfaces.

NOTE

Work slowly and deliberately. Plan your cutting before starting the machine.



DANGER



- Petrol is highly flammable
- Store fuel in containers specifically designed for petrol.
- Refuel outdoors only. (see section titled "Filling the Fuel Tank")
- Do not smoke while operating or refuelling.
- Add fuel before starting engine. Never remove the cap of the fuel tank while the engine is running or hot.

SAFETY AND WARNINGS

LIMITATIONS AND RESTRICTIONS

The SuperCut 2000 NT has been specifically designed for the pruning of branches of plants.

IMPORTANT

- a) Do not use the Trimmer to cut material with a diameter of more than 7mm. This may cause damage to the blades and / or transmission.
- b) Do not operate the Trimmer near ground level (eg. for weeds and lawns). This may cause damage to blades by soil, sand and pebbles. Stones being thrown up by the Trimmer may also cause injury to people and damage to property.
- c) Do not use the Trimmer for uses other than those outlined in the Operating Instructions.



WARNING

Turn OFF the engine before doing any of the following:

- a) Changing and adjusting blades, oiling and cleaning blades, repairing around the blades and blower.
- b) Installing and changing the collection bag.

SAFE OPERATION



WARNING

- a) Do not operate the SuperCut 2000 NT in a confined space or indoor where dangerous fumes can collect. If using this machine inside a Glasshouse or Tunnelhouse, all available doors, vents & exhaust systems should be opened. If this is not adequate - move the plants outside for pruning.
- b) Operate only in daylight or in good artificial light.
- c) Ensure cutting blades are disengaged before starting the engine.
- d) Disengage cutting blades and close throttle before turning off the engine.

PROTECTIVE CLOTHING



WARNING

The Supercut 2000NT Nursery Trimmer has a petrol driven engine and fast reciprocating blades. The engine can be noisy when operating and the blades can cause serious injury. Dress properly. Do not wear loose clothing or jewellery that can be caught in moving parts.

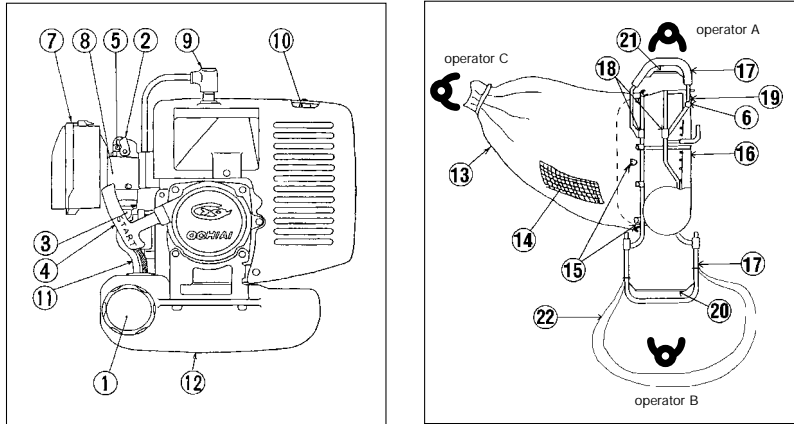
Use safety glasses, ear protection sturdy gloves & non-skid footwear.



SAFETY AND WARNINGS

SUPERCUT 2000NT NURSERY TRIMMER - CONTROLS

It is recommended that operators become thoroughly familiar with the following controls and components of the SuperCut 2000 NT.



Part No:	Part / Component	Part No:	Part / Component
1	Fuel Cap	12	Fuel Tank
2	Choke	13	Collection Bag
3	Primer Pump	14	Collection Bag Vent (to top)
4	Zip Cord Handle	15	Bag attachment points
5	Idle Screw	16	Blower
6		17	Handle
7	Air Cleaner	18	Handle Adjustment Points
8	Carburettor	19	Throttle
9	Spark Plug (Cover)	20	Hold to Run Control Engine Stop
10	Muffler	21	Hold to Run Control Blade Clutch
11	Fuel line	22	Harness

SAFETY AND WARNINGS



FUEL & OIL

The SuperCut 2000 NT has a TWO-STROKE ENGINE.

IMPORTANT

- It is recommended that the operator use regular grade UNLEADED fuel with two-stroke oil.
- Only use oil designed for Air Cooled, 2 Stroke motors

For the first **20 hours** of operation run at

 20 :  1 mixture

After **20 hours** of operation run at

 25 :  1 mixture

FILLING THE FUEL TANK

WARNING

Shut the engine off and place the SuperCut 2000 NT on level ground.

Clean around the fuel tank cap and remove the cap. Use a funnel and add the pre-mixed FUEL/OIL mix to **6mm below** the bottom of the filler neck.

Do not fill the tank completely.

Fasten the fuel tank cap securely. Wipe up or wash away any fuel that may have spilled.

Ensure no dust or other contaminants get into the fuel tank.

DANGER

Petrol is highly flammable.



Do not smoke while operating or refuelling.

Add fuel before starting engine. Never remove the cap of the fuel tank while the engine is running or hot.

Store fuel in containers specifically designed for this purpose

Store the unused fuel in airtight container in a dark and cool places Fuels deteriorate through long exposure to ultraviolet rays or excessive heat, resulting in failure to start and/or low power.



Refuel outdoors only

STEP by STEP OPERATION

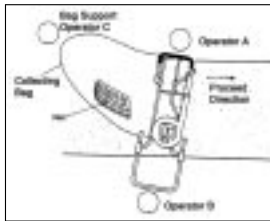
The Supercut 2000NT Nursery Trimmer is designed to be operated by three (3) trained persons.

WARNING

- a) Once the Trimmer and its components have been inspected for safety and the Collection Bag has been installed, the SuperCut 2000 NT is ready to be used.
- b) Carefully inspect the area to be cut and remove any objects which may be damaged or thrown up by the Trimmer.
- c) Operator B should grip the Hold to Run control on the handle at the engine end & pull the starter cord to start the engine.
- d) Operator A should adjust the throttle to the engine speed that best suits the type of plant being cut. Some experimentation with engine speed may be required to establish the most economical level for each plant type. Having the throttle fully open at the highest engine speed provides the best cut and collection method. However, high engine speed will consume more fuel and decrease engine life.
- e) The handle at the engine end is provided with a sling type harness which should be adjusted to fit over the operators shoulder to support the weight of the trimmer & reduce muscular strain.
- f) Operator A can engage the blades (by gripping the Hold to Run control at the non engine end) when ready to commence cutting.

NOTE

- g) The Trimmer requires 3 operators. Operator B (on the engine end) should proceed slightly behind operator A on the throttle lever end. This allows operator C to follow operator A & support the collection bag to prevent it dragging across the cut plants.
- h) Both operators A & B control the cutting height - some practice may be necessary to ensure a flat, even cut.
- i) With the Trimmer raised to the correct height for the plant, walk at an even pace down the row of plants to be cut.



CAUTION

- j) The bag will become heavy with prunings & will require emptying when filled. The ergonomic posture of each user and the weight of prunings have the potential to result in muscular strain. Nursery Supplies Australia P/L therefore recommend that the 3 users rotate positions every 10 minutes of operation, to reduce such risk.
- k) Shut off the engine and remove cuttings from the Collection Bag as required. If the Collection Bag becomes too heavy the Trimmer will be difficult and dangerous to operate.

IMPORTANT

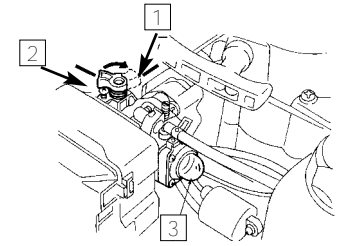
- l) If pruning larger or higher plants two or more cutting runs may be required. Do not attempt to remove excessive amounts of foliage on the first pass and never cut stems greater than 7mm in diameter.

STEP by STEP OPERATION

STARTING

COLD STARTS

- A. Place Supercut 2000NT on clear level ground.
- B. Remove blade protector.
- C. Pour the fuel into the tank and fasten the cap tightly.
- D. Pump fuel into the carburettor by pressing the primer pump until fuel is visible in bulb.
- E. Set the throttle lever at the idling (lowest) position.
- F. Ensure both Kill switch & Hold to run control are in the "Run" position.
- G. Swing the choke located at the top of the carburettor toward the engine to start.
- H. Turn off choke as engine begins to roughen.



- 1 Choke 'On' position
- 2 Choke - Operating Position 'Off'
- 3 Primer Pump

You cannot set the Choke at the starting position unless the throttle lever is in the idle position.

WARM STARTS

You can restart the engine immediately after operation with the Choke "Off".

STARTING

Put the machine on flat stable ground, and pull the zip cord with one hand and use the other to grip the Engine Stop Hold-to-run control and support the machine.

1. Pull the zip cord slowly at first and then as you feel the resistance pull quickly for the rest of the action.

IMPORTANT

2. DO NOT pull the cord out completely. Do not let the zip cord go. Let it retract slowly.
3. Ensure that the throttle lever remains at the idling position during warming up.
4. If you increase the throttle lever when the engines is not warm enough, the choke will automatically set back at the operating position and it may stop the engine
5. Allow machine to warm up for 2 minutes before cutting
6. Increase engine speed before commencing cutting.
7. Reduce throttle to idle when not cutting.
8. When in position to begin cutting, engage the cutting blades by Operator A gripping the Hold to Run Control on the throttle lever end. Always fully engage the blades & only do this when the engine is running.

ACTIVATING THE CUTTING BLADES

9. To disengage the cutting blades, operator A should release the Hold to Run Control on the throttle lever end.

STEP by STEP OPERATION

STOPPING

10. Disengage the cutting blades by operator A releasing the Hold to Run control.

11. Push throttle lever anti-clockwise to OFF point.



EMERGENCY STOP

12. Release the Engine stop Hold to Run Control or switch the Off Button/Kill Switch to the "O" position, to stop the engine.

CAUTION

13. Always ensure that the engine is turned off and the blades are disengaged before placing the SuperCut 2000 NT down on the ground.

INSTALLATION OF COLLECTION BAG

NOTE

- Keep the net section of the bag to the top.
- Locate a 'buttonhole' opening on the middle of the elastic hem and attach this onto the upper middle hook of the frame. The elastic hem should be clipped over all six (6) hooks working from one side of the Trimmer to the other.
Note that the lower half should be mounted between the aluminium plates.
- Tie up the open end of the bag.



ATTACH BAG HERE

REMOVAL OF COLLECTION BAG

- Turn off the engine.
- Place the Trimmer onto level ground.
- Carefully remove the bag from the hooks on the frame.
- Untie the bag and remove cuttings.
- Replace the bag if required.



WARNING

- **Never** attempt to install or remove Collection Bag while the engine is operating and/or the cutting blades are engaged.

REPLACING THE DRIVE BELT

- If inspection finds the Drive Belt is worn, frayed or slipping remove the guards and release the blade clutch cable from the tension pulley.
- The Drive Belt should be loose enough to remove from the engine pulley and drive shaft pulley.
- Fit new belt (M19 for V8NEWZ2 or M18 for V8XHD)
- Reposition tension pulley and refit the blade clutch cable.
- Refit guard

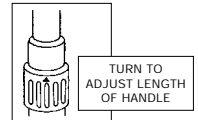
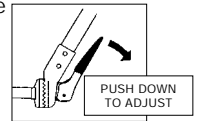


STEP by STEP OPERATION

ADJUSTING HANDLES

For safety and optimum performance the handles on either side of the Supercut 2000NT Nursery Trimmer should be adjusted to suit each individual user.

- Locate the handle adjustment on either side of the Trimmer.
- Release the handles and adjust the angle and length so the Trimmer is comfortable and easily controlled. The ratchet allows for height adjustment and the slide clamp allows for length adjustments.



MAINTENANCE



IMPORTANT

- Regular and on going maintenance of your SuperCut 2000 NT will ensure optimal performance and lifespan. The supplier recommends major services be performed by a reputable Service Mechanic.
- Stop the engine & remove the spark plug lead before attempting any maintenance or repair work.
- Refer to the Maintenance Checklist for recommended service intervals.

OILING CUTTING BLADES



- Locate **ALL oil points** on the blades and using an oiling can, place several drops of oil into each of the holes.
- Start the engine, engage the blades to distribute the oil and then disengage blades and turn off engine.
- Remove excess Oil.
- It is recommended that the blades be oiled after every 1 hour of operation and at the end of each session where plants are wet.



OIL POINTS

GREASING CRANK CASE



- Locate Grease nipple on the transmission housing

IMPORTANT

- Using a grease gun, apply grease to the grease nipples until the old grease begins to be expelled from near the blades.
- Use only Rocol Sapphire HI-TEMP 2 (or equivalent specification - NLGI no.2, -40°C to 200°C)



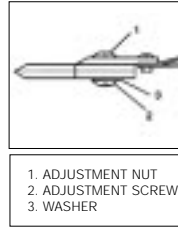
GREASE NIPPLE

MAINTENANCE

SETTING AND ADJUSTMENT OF CUTTING BLADES

IMPORTANT

The fast, reciprocal movement of the blades can cause blades to lose their adjustment. If the quality of cutting is reduced, some adjustment of the blades may be necessary. Adjustments are made as follows:



- Whilst holding the screw (2) on the bottom of the blades, loosen nut (1) off completely. Use the special tool and screwdriver supplied.
- Re-tighten the nut fully and then turn back 1/2 to 3/4 turn so the blades will move freely.
- Repeat for all other nuts on the blades.
- Oil the blades after adjusting the nuts and bolts.

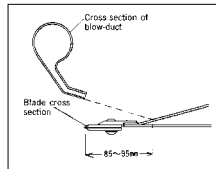
CHECK THE ADJUSTMENT OF BLADES

To check the adjustment of the nuts and bolts on the blades:

- Start the engine and engage the blades. Run the Trimmer at the highest possible speed for approximately one minute. Disengage the blades and turn off the engine.
- If the nuts on the cutting blades are warm to touch, adjustment and clearance is correct. If the nuts are hot to touch, they are too tight and need to be loosened 1/3 to 1/2 turn.
- Repeat steps 1 + 2 above.

ADJUSTMENT AND CLEANING OF BLOW-DUCT.

The Blow-duct will not require adjustment under normal conditions of use. The direction of the outlets on the frame is crucial to the way the cuttings are blown into the bag. The openings on the blower should remain free from blockages.



If the Blow-duct direction is not correct then optimal performance pick-up of cuttings will not occur.

1. Loosen off screws on the base of the duct and rotate duct back into the correct position.
2. Re-tighten screws.

CLEANING OF BLOWER

If performance of blow-duct is noticeably reduced, it could be due to a blockage or debris build up on the fan air intake.

1. With engine off, carefully clean the area on the fan cover of any dust or debris with a soft brush.
2. Do not insert anything into the Air Intake when engine is running as the rotating parts may cause personal injury or result in damage to the machine.



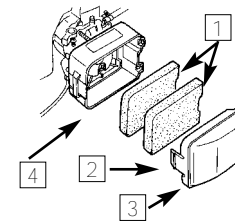
WARNING

MAINTENANCE

COOLING FINS

Inspect the engine cylinder cooling fins before each operation & remove any debris which may clog the fins. When cooling fins are clogged, the engine may overheat resulting in breakdown.

CLEANING OF AIR FILTER



- 1 Air filter elements (X2)
- 2 Cover Hook
- 3 Air filter cover
- 4 Air filter body

- A. Remove dust inside the air filter cover after every 25-hours of operation. (more often in Dusty conditions). To open the air filter, press the hook to detach the air filter cover.
- B. If the element is heavily soiled, clean it thoroughly with petrol and dry it well.
- C. Check internal surfaces of body & Carburettor intake throat & ensure no dust or debris is present. Reinsert air filters
- D. If the element is deformed or damaged, replace it with new one. Refer to Nursery Supplies Australia Pty Ltd or Authorised Agent for replacement parts.

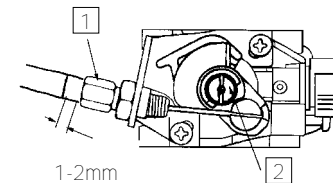
IMPORTANT

A clogged or damaged air-cleaner element may lead to the reduction of engine performance.

Do not operate the engine without element or with deformed or damaged element. This can damage the engine.

CARBURETTOR ADJUSTMENT

TENSION OF THE THROTTLE CABLE



- 1 Throttle Cable Tension Nut
- 2 High Speed Mixture Adjuster Screw

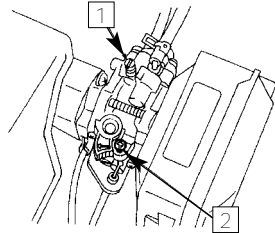
One to two millimetres of clearance is appropriate with the throttle lever at the idle position. You can adjust the clearance by loosening or tightening the throttle cable adjustment nut located at the upper side of the carburettor.

MAINTENANCE

IDLING SPEED

IMPORTANT

These screws are set at the factory & should not require adjustment. It is best to refer this type of adjustment to an experienced mechanic.



- 1 Idle Adjustment Screw
- 2 Idle Mixture Screw

Adjust the engine speed at idle by turning the idle adjustment screw. If the engine stops or the engine speed is too high, amend adjustment as required.

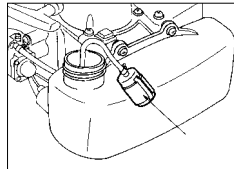
To increase the idle rpm, turn the screw to the right, and to reduce, turn the screw to the left.

FUEL TANK AND FUEL FILTER

Inspect the inside of the fuel tank after every 25 hours operation. If dust or moisture is found, remove the tank from the machine and clean it thoroughly. Dry well and replace.

To clean the fuel filter, empty the fuel tank and then take out the fuel filter.

If the filter is clogged up, replace it with new one. Refer to Nursery Supplies Australia Pty Ltd or Authorised Agent for replacement.



FUEL TANK CAP

Inspect the air vent, and if it is clogged up, take the cap off and carefully dislodge dust using a soft wire. Take care to avoid contaminating fuel in tank.



IMPORTANT

Clogging of the fuel filter or the air vent can cause low power or sub-standard engine performance.

Do not operate the engine without the fuel filter. Sediment may enter the carburettor and may cause damage to the engine

PLANT HYGIENE

In order to reduce the risk of spreading disease, it is recommended that the cutting blades of the SuperCut 2000NT Nursery Trimmer be sterilised after each row of plants, or between cutting of different species plants. The sterilising solution used for your pruning equipment should be sprayed on to the upper & lower blades, before moving on to the next group of plants.

ROUTINE MAINTENANCE

AFTER EACH USE

IMPORTANT

Your SuperCut 2000 NT should be maintained after each use.

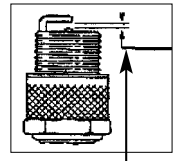
1. Allow engine to cool down after use.
2. Hose down blades after use and oil blades.
3. Remove any dirt or mud from Trimmer.
4. Remove any cuttings from the collection bag.
5. If collection bag is wet, hang up or lay it out to air dry.

REPLACING AND ADJUSTING SPARK PLUGS

CAUTION

1. Do not attempt to remove the spark plug whilst engine is running - electrocution could occur.
2. Do not touch spark plugs with bare hands after engine has been running. Spark Plugs can be hot & can cause burns.
3. Clean the electrode after every 25-hours operation. Using the tool provided, take out the spark plug and use a wire brush to clean the electrode.
4. If the electrode is too fouled or pitted, replace the spark plug with either of the following recommended replacements.

Brand	NGK	Champion
Type	BPMR7A	RCJ-6Y (or equivalent)
Gap	0.6mm to 0.7mm	0.6mm to 0.7mm



GAP @ 0.6 - 0.7mm

IMPORTANT

An incorrect gap can cause difficulty starting and/or reduced power.

Incorrectly adjusted carburettor or poor quality 2 Stroke oil will foul the spark plug can cause difficulty starting and/or reduced power.

SHARPENING CUTTING BLADES

Cutting blades are made from specially hardened steel. Sharpening of blades should only be carried out by an experienced technician, as incorrect sharpening can cause blades to lose their hardness.

TRANSPORT & STORAGE

When transporting or storing the SuperCut 2000NT Nursery Trimmer, always fit the guard over the blades & remove fuel

LONG TERM STORAGE

If you are not going to use SuperCut 2000 NT for some time the following procedures are recommended:

1. Remove fuel tank cap and carefully remove any fuel.
2. Oil cutting blades (see section: Oiling Cutting Blades).
3. Remove any dust or debris from Trimmer.
4. Start the engine and let it run until the unit stops to remove the fuel from the fuel system.
5. Allow the engine to cool (approx. 5 minutes).
6. Remove Spark plug lead & using the tool provided, remove the spark plug.
7. Insert 1 teaspoon of 2 Stoke oil into the cylinder (through the spark plug hole) and gently pull the zip cord several times to coat the internal surfaces with oil.
8. Refit the spark plug and lead. Pull the zip cord once.
9. Store SuperCut 2000NT Nursery Trimmer in original carton or cover with a plastic sheet, in a location free of moisture or dust.

REMOVAL FROM STORAGE

1. Remove spark plug and pull zip cord to expel excess oil from chamber.
2. Check or replace spark plug.
3. Inspect machine. Make adjustments & lubricate as required
4. Fill tank with freshly mixed fuel at correct ratio.

MAINTENANCE CHECKLIST



The following is the recommended maintenance schedule for your SuperCut 2000 NT.

Service/Operation	Each Use	1 hours	5 hours	25 hours	100 hours	Storage Service
Safety check / Visual inspection	✓					✓
Oil Cutting Blades	✓	✓				✓
Grease Crank Case		✓				✓
Clean Air Filter & Air intake				✓*		✓
Engine/Body Clean	✓					✓
Sharpen Blades					✓	✓
Spark Plug / Fuel Filter				✓		
Adjust Throttle Cable				✓		
Adjust Blade Clutch cable				✓		
Check Blade Adjustment				✓		

* Clean more often in dusty conditions



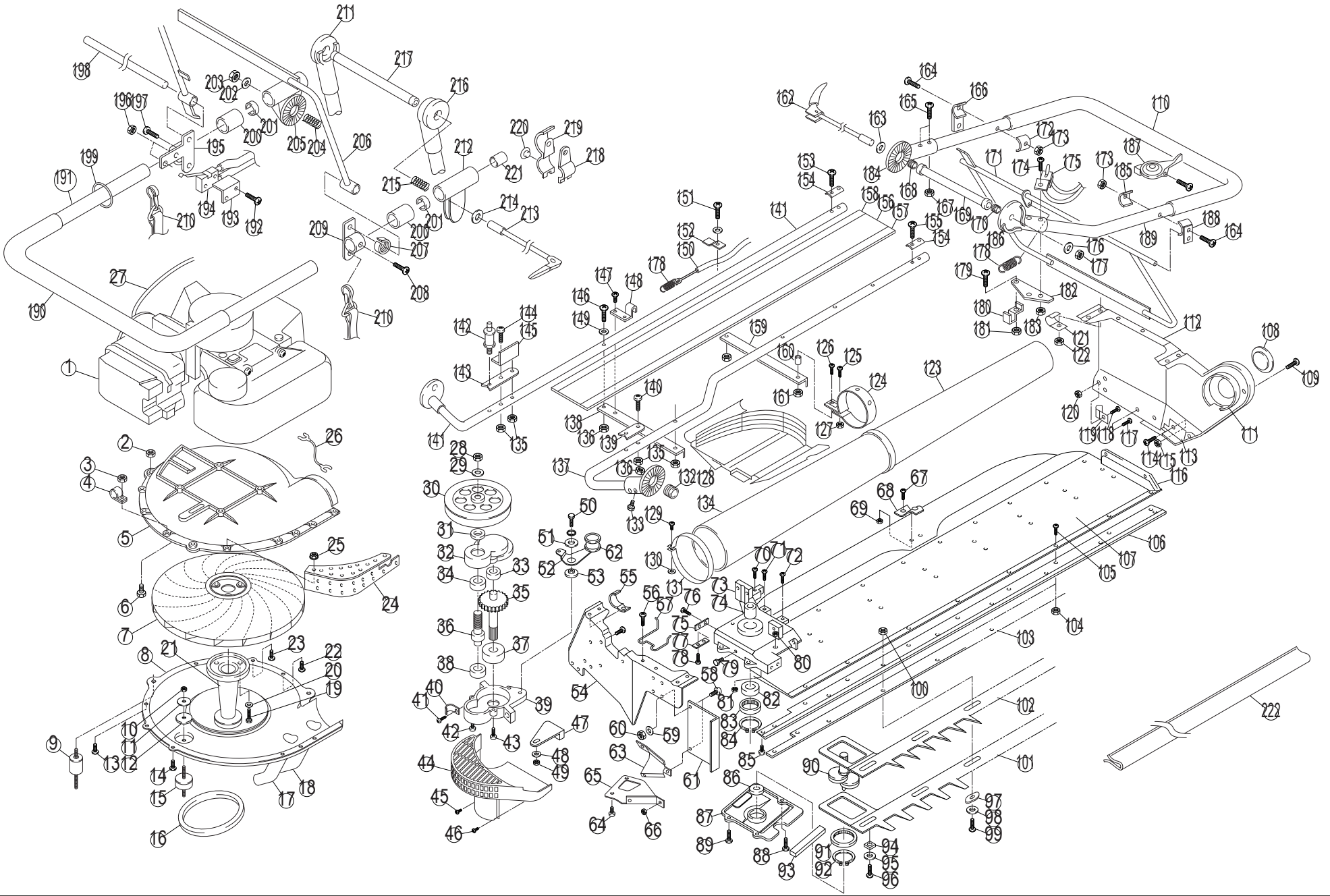
TROUBLESHOOTING

PROBLEM	POSSIBLE CAUSES	CORRECTIVE ACTION
Cut is not clean and precise, causing damage to plants	<ul style="list-style-type: none"> • Blade movement too slow • Clearance between upper and lower blades too wide • Direction of blow-duct not correct 	<ul style="list-style-type: none"> • Run engine at higher speed • Adjust blades as per instructions • Adjust blow-duct to correct position
Reduced capacity/ Collection bag is not filling properly	<ul style="list-style-type: none"> • Reduced blowing capacity • Direction of blow-duct not correct 	<ul style="list-style-type: none"> • Run engine at higher speed • Adjust blow-duct to correct position
Cutting blades not moving freely	<ul style="list-style-type: none"> • Lack of lubricant on blades • Lack of lubricant in crank case • Dust between blades • Cutting Blade adjustment is not correct 	<ul style="list-style-type: none"> • Oil blades as recommended • Grease as required • Remove dust from blades • Adjust cutting blades as required
Engine will not run continuously	<ul style="list-style-type: none"> • Fuel not primed properly 	<ul style="list-style-type: none"> • Prime fuel line until no air is visible in fuel line
Engine will not start, is hard to start, or fails to keep running	<ul style="list-style-type: none"> • Fuel tank is empty • Choke is not ON or OFF as required • Air cleaner is dirty • Spark plug lead is loose or disconnected • Spark plug is pitted, fouled, or gap is incorrect • Fuel is stale or contaminated • Engine stop activated 	<ul style="list-style-type: none"> • Fill tank with fuel/oil mix • Turn choke on or off as required • Clean air filter • Install lead on spark plug • Install new, correctly gapped spark plug • Empty fuel and replace with fresh mix. • Grip the engine stop Hold to run control or move kill switch to "I" position

SPECIFICATIONS

Drive Belt	M-19 Centreline
Weight	13kg (with Fuel)
Carton dimensions	1500 x 520 x 480mm
Cutting Blade Length	1150mm
Fuel	Premixed Unleaded Petroleum and 2 Stroke oil for aircooled engines
Fuel / Oil ratio	20:1 for first 20 hours of operation (200ml per 4L unleaded fuel). 25:1 after first 20 hours (160ml per 4L unleaded fuel).
Engine displacement	41.5cc
Spark plug	Champion RCJ-6Y or NGK BPMR7A
Blade Oil	Castrol Chain & Bar oil (or similar)
Transmission grease	Hi temperature grease of grade NLGI no2. (-40°C to +200°C) Eg Rocol Sapphire HI-TEMP 2

The SuperCut 2000NT Nursery Trimmer has been tested & found to comply with EC directive: EC/98/37.





Parts Numbers

Chart	Part No.	Description
1	R002-03500	Engine
2	K162-050000	Flange Nut M5
3	K161-040000	Flange Nut M4
4	R037-000400	Nilon Grip SN4A
5	A190-100001	Fan Casing E
6	K049-060200	Upset Screw M6×20
7	R060-000100	Turbo Fan
8	133-017	Casing (S)
9	A035-007004	Engine Mount Rubber
10	K164-050000	U Nut M5
11	021-186	Flat Washer
12	021-158	Casing Rubber Washer
13	K012-040160	Screw M4×16
14	K012-040140	Screw M4×14
15	021-155	Engine Mount Rubber
16	K320-019000	V Belt (Center Line) M19
17	133-130	First Duct
18	133-127	Second Duct
19	K080-060186	Hole Bolt M6×18
20	K210-060000	Hole Bolt M6×18
21	096-155	Pulley (Engine)
22	K012-040080	Screw M4×8
23	K012-040080	Screw M4×8
24	A354-107003	Cover Pulley 1
25	K161-040000	Flange Nut M4
26	062-224	Earth Lead Cable Wire
27	A010-128003	Throttle Cable Wire 1210
28	K152-10000L	Hexagon Nut(Left) M10P1.5
29	K225-100000	Plate Spring M10
30	021-122	Pulley
31	021-180	Pinionshaft Collar
32	096-110	Gear Case (Upper)
33	K350-006080	Bearing 608 (ZZ)
34	K352-060000	Bearing 6000 (RS)
35	096-113	Output Gear
36	096-112	Pinion
37	K352-060000	Bearing 6000 (RS)
38	K350-006080	Bearing 608 (ZZ)
39	103-141	Gear Case (Lower)
40	008-341	Metal Fitting
41	K016-040160	Small Screw M4×16
42	K016-040140	Small Screw M4×14
43	K016-040140	Small Screw M4×14
44	103-105	Cover & Fan Casing
45	K113-400100	Screw M4×10
46	K113-400100	Screw M4×10
47	096-158	Engine Mount Rubber Stay
48	K204-050000	Flat Washer M5
49	K164-050000	U Nut M5
50	K040-060180	Hexagon Bolt M6×18
51	K204-060000	Flat Washer M6
52	103-129	Tension Arm
53	021-196	Tension Metal
54	A289-116002	Side Flame(L)
55	A025-005004	Metal Fitting
56	K016-050210	Small Screw M5×12
57	103-128	Belt Holder
58	K012-040100	Screw M4×10
59	K204-040000	Flat Washer M4
60	K150-040000	Nut M4

Chart	Part No.	Description
61	A354-110003	Standing Plate
62	008-254	Tension Bridge
63	133-132	Upper Leaf Drawings (engine)
64	K012-040060	Screw M4×6
65	096-211	Lower Leaf Drawings (engine)
66	K150-040000	Nut M4
67	K012-040060	Screw M4×6
68	008-273	Bag Hook
69	K150-040000	Nut M4
70	K012-040160	Screw M4×6
71	K012-040130	Screw M4×13
72	K012-040080	Screw M4×8
73	133-100	Crank Case (Upper)
74	096-116	Connecting Sleeve
75	009-259	Brushing Plate
76	K031-040060	Screw for Sash M4×6
77	009-259	Brushing Plate
78	K031-040060	Screw for Sash M4×6
79	R055-000100	Grease Nipple
80	K164-660000	Thin U Nut M6
81	K150-040000	Nut M4
82	K352-060000	Bearing #6000 2RS
83	R049-000100	Bearing RNU060405
84	K283-030000	C Stopper Ring STW30
85	K031-050080	Screw for Sash M5×6
86	K354-006080	Bearing 608 2RS
87	096-118	Crank case (Lower)
88	K052-050160	Upset Screw M5×16
89	K052-050160	Upset Screw M5×16
90	096-119	Crankshaft
91	R049-000100	Bearing RNU060405
92	K283-030000	C Stopper Ring STW30
93	009-260	Felt
94	092-133	Bridge
95	008-250	Blade Slide Washer
96	008-246	Blade Slide Screw
97	133-205	Bridge 18M
98	A151-124004	Blade Slide Washer
99	A040-007004	Blade Slide Screw
100	K164-060000	Thin U Nut M6
101	A254-365009	Lower Blade1210
102	A265-362009	Upper Blade1210
103	133-110	Slide Plate 1210
104	K150-040000	Nut M4
105	K012-040080	Screw M4×8
106	133-224	Blade Clip Plate1210
107	110-015	Bottom Frame1210
108	008-256	Rubber Cap
109	K012-040080	Screw M4×8
110	A035-005003	Grip Rubber
111	110-145	Duct Mounting Flange (Large)
112	110-143	Side Frame (R)
113	110-148	Leaf Drawing Plate (R)
114	K012-040060	Screw M4×8
115	K150-040000	Hexagon Nut M4
116	110-144	Corner Block(R)
117	K016-040100	Small Screw M4×10
118	K016-040160	Small Screw M4×16
119	008-341	Metal Fitting
120	K150-040000	Nut M4



Parts Numbers

Chart	Part No.	Description
121	A025-010004	Metal Fitting
122	K164-050000	U Nut M5
123	110-104	Duct (Thin) Large
124	110-149	Band (Duct center)
125	K016-040160	Small Screw M4×16
126	K016-040300	Small Screw M4×30
127	K150-040000	Nut M4
128	103-104	Cover & Fan Casing
129	K016-040300	Small Screw M4×30
130	K199-040000	Square Nut M4
131	A116-147004	Band (L)
132	008-114	Coil Spring
133	K010-040320	Small Screw M4×32
134	110-015	Level Duct (thick) Extra Large
135	K164-050000	U Nut M5
136	K150-040000	Nut M4
137	A354-116001	Frame Pipe1210(F)
138	103-121	Frame Angle Iron (L)
139	096-154	Pipe Reinforcement
140	K010-050320	Small Screw M5×32
141	110-122	Frame Pipe (B)
142	A035-007004	Engine Mount Rubber
143	103-130	Pipe Reinforcement R
144	K010-050350	Small Screw M5×35
145	A354-108004	Cover Pulley 2
146	K010-040300	Small Screw M4×30
147	K110-040800	Screw M4×8
148	084-135	Cable End Holder
149	K204-040000	Flat Washer M4
150	A010-297003	Tension Cable Wire
151	K010-040300	Small Screw M4×30
152	A025-009004	Metal Fitting
153	K010-050350	Small Screw M5×35
154	092-129	Pipe R Washer
155	K010-050300	Small Screw M5×30
156	110-137	Transparent Plate 1210
157	110-128	Transparent Plate Holder (F)
158	110-127	Transparent Plate Holder (B)
159	096-132	Frame Angle Iron (Center)
160	110-142	Band Collar
161	K150-040000	Nut M4
162	A015-014003	Handleshaft
163	K207-080101	Flat Washer φ 8 ×28×1.0
164	K010-050350	Small Screw M5×35
165	K010-050350	Small Screw M5×35
166	A354-102004	Short Handle lever 2
167	K150-050000	Hexagon Nut M5
168	062-185	Coil Spring
169	096-148	Handleshaft Collar
170	062-185	Coil Spring
171	A354-101003	Short Handle lever 1
172	A354-103004	Lever Washer
173	K161-050000	Flange Nut M5
174	K010-050400	Small Screw M5×40
175	A354-114004	Short Handle Lead Cable
176	K207-080151	Flat Washer φ 8 ×28×1.0
177	K166-080000	U Nut 3types M8
178	008-287	Hook Coil Spring
179	K012-040100	Screw M4×10
180	A116-168004	Cable Holder

Chart	Part No.	Description
181	K161-040000	Flange Nut M4
182	A354-109004	Tension Stay
183	K150-050000	Nut M5
184	A030-010003	Ajuster 0°
185	A354-103004	Lever Washer
186	A030-012003	Ajuster 70°
187	R030-001700	Throttle Lever
188	A354-102004	Short Handle lever 2
189	A354-100003	Short Handle
190	A035-006009	Grip Rubber
191	133-207	U Handle
192	K010-030180	Small Screw M3x18
193	A354-112004	Remit Cover
194	A354-113004	U Handle Lead Cable
195	A354-104004	U Handle Lever 1
196	K161-030000	Flange Nut M3
197	K010-040050	Small Screw M4×5
198	A354-111003	Levershaft
199	A354-117004	Lead Cable Stopper
200	008-300	Handle Fixing Nut
201	008-304	Handle Bush
202	K207-080151	Flat Washer φ 8 ×18×1.5
203	K166-080000	U Nut 3types M8
204	008-114	Coil Spring
205	A030-006003	Adjuster Slide R
206	A354-106003	U Handle Lever 3
207	A003-030004	Screw Spring
208	K010-040050	Small Screw M4×5
209	A354-105004	U Handle Lever 2
210	A354-115003	Shoulder Band
211	A030-007003	Ajuster 45°
212	A030-005003	Adjuster Slide F
213	115-002	Handleshaft
214	K207-080101	Flat Washer φ 8 ×28×1.0
215	008-114	Coil Spring
216	A030-011003	Ajuster 70°
217	096-149	Handleshaft Collar
218	A030-004003	Slide S
219	A030-003003	Slide L
220	A031-001004	Binder Small Screw M5
221	008-320	Tip Cap
222	008-223	Blade Cover